

Linum flos-carmini (Linaceae), a new species from northern Morocco

José Ruiz-Martín¹, Pedro Jiménez-Mejías^{2,3}, Juan M. Martínez-Labarga^{2,4} & Rocio Pérez-Barrales^{1,5,*}

¹) Departamento de Biología Vegetal y Ecología, Universidad de Sevilla, ES-41012 Sevilla, Spain

²) Departamento de Biodiversidad y Conservación, Real Jardín Botánico, CSIC, ES-28014 Madrid, Spain

³) School of Biological Sciences, Washington State University, P.O. Box 644236, Pullman, WA 99164-4236, USA

⁴) Departamento de Sistema y Recursos Naturales, Escuela de Ingeniería Forestal y del Medio Natural, Universidad Politécnica de Madrid, ES-28040 Madrid, Spain

⁵) School of Biological Sciences, University of Portsmouth, Portsmouth PO1 2DY, UK
(*corresponding author's e-mail: rocio.barrales@port.ac.uk)

Received 9 Jan 2015, final version received 28 Aug. 2015, accepted 1 Sep. 2015

Ruiz-Martín J., Jiménez-Mejías P., Martínez-Labarga J.M. & Pérez-Barrales R. 2015: *Linum flos-carmini* (Linaceae), a new species from northern Morocco. — *Ann. Bot. Fennici* 52: 383–395.

Linum bicolor is a problematic North African taxon associated with *L. setaceum*. A consensus on the taxonomic status of a putative form (*L. setaceum* var. *bicolor* f. *robusta*) has not been achieved yet. We conducted a morphological study based on herbarium and field collections, combined with nuclear (ITS) and plastid (*ndhF*5-8 and *trnL-F*) phylogenies to clarify its status. The phylogenetic analysis did not reveal molecular divergence, but a comparative morphological study revealed substantial differences in traits previously used to distinguish the two taxa (stems, leaves, corolla and calyx size). In addition, we found that the indumentum of sepals, petal colour, and the arrangement of anthers and stigmas differed so clearly between the form *robusta* and *L. setaceum* s. *stricto*, that recognizing the former taxon as an independent species was justified. We provide an identification key to the yellow- and white-flowered *Linum* species in NW Africa. We also revised the unplaced name *L. bicolor* Schoubs. ex DC. and lectotypified it to avoid nomenclatural problems.

Introduction

Linaceae is a cosmopolitan family of 14 genera, of which *Linum* is the most diverse (ca. 250 species). It has a wide geographic distribution, from temperate to tropical regions (McDill *et al.* 2009, 2011). The most recent taxonomic review of *Linum* recognized five sections (McDill *et al.* 2009), although the molecular data in that study

showed that some sections were not monophyletic. This illustrates how crucial it is to investigate the taxonomy and systematics of the *Linum* species and to disentangle the infrageneric classification.

The taxonomy of the *Linum* species in North Africa is particularly unclear. Linaceae was not included in the extensive (although incomplete) revision by Maire (1952–1987). His notes at the

genus level were recorded in the periodical fascicles of the *Contributions à l'étude de la Flore de l'Afrique du Nord* (cf. Lebrun & Stork 1978). More recent treatments and checklists adopted a conservative taxonomical and nomenclatural approach (cf. Quézel & Santa 1963, Greuter *et al.* 1989, Valdés *et al.* 2002, Fennane *et al.* 2007) and did neither review the genus profoundly nor include new combinations or synonyms.

Linum bicolor illustrates well the taxonomic confusion. De Candolle (1824: 428) described the species from near Tanger (Morocco) as “*Species non satis notae*” (“species not well known”), with a brief diagnosis in which he implicitly indicated that it was related to *L. tenuifolium* but distinguishable from it by the presence of “annual roots and flower colour”. After that description, *L. bicolor* was treated by Ball (1878) as a doubtful taxon. He stated “*Quid sit nescio*” (literally “I do not know what it is”), and discussed its possible origin as a hybrid between *L. setaceum* and *L. angustifolium* (= *L. bienne*). Later, Maire (1933: 206) treated the taxon as *L. setaceum* var. *bicolor*. Maire (1933: 207) also described a new form based on a collection by Pius Font-Quer (*L. setaceum* var. *bicolor* f. *robusta*), presumably distinguishable by being larger than the typical form *bicolor*.

The field surveys conducted by the first author, and the herbarium material revised for the project *Flora Iberica* allowed identification of materials ascribable to *L. setaceum* var. *bicolor* f. *robusta*. In this study, we aimed at revisiting this taxon and clarifying its taxonomic status. We firstly conducted a morphological study revising Iberian and North African materials ascribable to *L. setaceum* s. *lato* (i.e. *L. setaceum* s. *stricto* and *L. setaceum* var. *bicolor* f. *robusta*). We studied vouchers from MA and SEV, which house the two main North African collections in Spain, as well as field material, and revised the digitalized material housed at JSTOR Global Plants (plants.jstor.org). We also carried out a phylogenetic analysis based on nuclear (ITS) and plastid (*ndhF5-8* and *trnL-F*) markers to disentangle the phylogenetic relationships. Our results suggest that plants belonging to the form *robusta* are distinguishable from *L. setaceum* s. *stricto* at the species level. We provide a key to identify the yellow- and white-flowered *Linum* species from

NW Africa, and revise the nomenclatural and taxonomic status of, as well as lectotypify, the name *L. bicolor* Schoubs. ex DC.

Material and methods

Morphological study

Morphological characters of nine specimens from eight collections of *L. setaceum* var. *bicolor* f. *robusta*, as well as of 25 specimens and collections of the Ibero-North African *L. setaceum* s. *stricto* were measured and compared (Appendix). We examined the important characters according to the taxonomic treatment in Europe and the Mediterranean (i.e. size of sepals, petals and stigmata; Quézel & Santa 1963, Ockendon & Walters 1969, López 1979, Valdés *et al.* 2002, Fennane *et al.* 2007), with particular emphasis on the characters already reported as distinctive between *L. setaceum* s. *stricto* and the form *robusta* (habit, leaves, corolla, calyx size; Maire 1933). Iberian and North African populations of *L. setaceum* s. *stricto* were evaluated separately to assess possible differences among them. We also searched for type materials of *L. bicolor* in eleven of the herbaria listed in Stafleu and Cowan (1985) as housing Schousboe's collections (B, BM, BR, C, FI, GOET, K, L, S, UPS and W).

Molecular study

Sampling

Our sampling covered the four sections recognized by McDill *et al.* (2009) (Table 1). We included 21 samples, 14 of which were taken from McDill *et al.* (2009) and 7 new samples from the specimens collected in the field and in the herbarium (Table 2). Two samples of *L. setaceum* (one from the Iberian Peninsula and one from Morocco), and a sample of the form *robusta* (hereafter *L. flos-carmini*) were studied, representing both known morphological extremes and distribution of *L. setaceum* s. *lato*. Three outgroups were included based on the previous phylogenetic studies (Savolainen *et al.*

2000, McDill *et al.* 2009), namely *Sclerolinon digynum*, *Anisadenia pubescens* and *Hugonia busseana* (Table 2).

DNA extraction, PCR amplification and sequencing

DNA was extracted from 15–20 mg of silica-dried leaf tissue using the DNEasy Plant Minikit (QIAGEN Inc.) following the protocol of the manufacturer. We amplified and sequenced the nuclear ribosomal ITS region, and the plastid *ndhF* and *trnL-F* regions. We used the primers 17SE and 26SE (Sun *et al.* 1994) for PCR amplifications of ITS; for the plastid regions, we used the primers described by Jansen (1992) for *ndhF* and by Taberlet *et al.* (1991) for *trnL-F*. The three markers were amplified using the following PCR profile: 94 °C for 5 min; followed by 33 cycles of 94 °C for 1 min, 51 °C for 1–2 min and 72 °C for 2 min; with a final step of 72 °C for 10 min). Amplified DNA product was purified using the enzyme Exo SAP-IT® for PCR Product Clean-Up (USB laboratory, Cleveland) and sequenced in Macrogen sequencing service (Amsterdam).

Phylogenetic analyses

We constructed a matrix for the ITS region (nuclear matrix), and another for the *ndhF*-5-8 and *trnL-F* regions together (concatenated plastid matrix). To align sequences, we used MAFFT 6.0 FFT-NS-I (Katoh *et al.* 2008) implemented in Geneious Pro™ 5.5.6 (Biomatters Development Team, Auckland). The resulting alignments

were checked manually and poorly aligned positions were eliminated using GBlock v0.91b (Castresana 2000), with less restrictive treatment to avoid losing information.

For each matrix, we performed maximum parsimony (MP) using TNT (Goloboff *et al.* 2008), maximum likelihood (ML) using RAxML ver. 7.3.1 (Stamatakis *et al.* 2006) implemented in Cipres Science Gateway bioportal (<https://www.phylo.org>), and Bayesian inference using MrBayes 3.1.2 (Ronquist & Huelsenbeck 2003). For MP analyses, we set equal weighting of all characters. The ITS matrix was engaged with 5000 random addition replicates, and the plastidial matrix with 3000 replicates, according to computation time. Non-parametric bootstrap analysis under MP criterion took two trees per replication and TBR (tree bisection-reconnection) swapping to completion on a maximum of 20 000 minimal trees found. For the ML analysis, we performed 500 search replicates with starting topologies determined by the random step-wise addition sequence. We executed 1000 rapid bootstrap inferences to obtain bootstrap values. We performed the Bayesian analysis under the best substitution model recovered by ModelTest 3.06 (Posada & Crandall 1998) using Akaike's information criterion. Models were calculated independently for each marker (Table 3). We ran four parallel Markov Chain Monte Carlo for 10 000 000 generations with trees sampled every 1000 generations. Two independent analyses were performed to check whether convergence to the same posterior distribution was reached. The first 1000 trees were discarded as burn-in. We estimated the 50% majority rule consensus of the remaining trees and used posterior probability as an alternative estimate of robustness.

Table 1. Sections recognized in *Linum* (McDill *et al.* 2009).

Section	Flower color	Distribution	Type species	Phylogenetic status
<i>Syllinum</i>	Yellow	Europe and W Asia	<i>L. flavum</i>	Monophyletic
<i>Dasylinum</i>	Rose-bluish	E Europe to central Asia	<i>L. hirsutum</i>	Monophyletic
<i>Cathartolinum</i>	White	Europe and W Asia	<i>L. catharticum</i>	Monotypic
<i>Linopsis</i>	White or pale yellow	Europe, SW Asia, N, E & S Africa, N & S America	<i>L. quadrifolium</i>	Paraphyletic/polyphyletic
<i>Linum</i>	Bluish	N America, N Africa, Eurasia, Australia, New Zealand	<i>L. usitatissimum</i>	Monophyletic

Table 2. Samples included in the phylogenetic analysis. Sections follow the classification by McDill et al. (2009). Voucher information is given for the original samples provided in this study. GenBank accession numbers are given for ITS and cpDNA sequences.

Taxon	Distribution	Section	Country	Voucher	ITS	ndhF5-8	trnL-F
<i>L. africanum</i>	S Africa	<i>Linopsis</i>	South Africa, Cape Region	W.J. Hanekom 2630 (MO)	FJ169551	FJ160777	FJ160861
<i>L. album</i>	W Asia	<i>Syllinum</i>	Iran	I. Meherigan 040948 (MJG)	FJ169547	FJ160792	FJ160876
<i>L. arboreum</i>	Greece and Turkey	<i>Syllinum</i>	Turkey	U. Hecker TH0191 (MJG)	FJ169537	FJ160793	FJ160793
<i>L. austriacum</i>	Europe	<i>Linum</i>	Cultivated (MJG)	M. Reppinger 040933 (MJG)	FJ169522	FJ160799	FJ160883
<i>L. bienne</i>	Cosmopolitan	<i>Linum</i>	Italy	(MJG)	FJ169527	FJ160797	FJ160881
<i>L. campanulatum</i>	Spain, France	<i>Syllinum</i>	Spain	J. Ruiz-Martín 281542 (SEVI)	KJ194513	KJ194519	KJ194525
<i>L. flos-carmini</i>	N Africa	<i>Linopsis</i>	Morocco	J. Ruiz-Martín 281783 (SEVI)	KJ194514	KJ194520	KJ194526
<i>L. hirsutum</i>	E Mediterranean	<i>Dasylinum</i>	Cultivated (MJG)	M. Reppinger 040935 (MJG)	FJ169520	FJ160788	FJ160872
<i>L. macraei</i>	Chile and Peru	<i>Linopsis</i>	Chile	P. Aravena 33388 (MO)	FJ169544	FJ160782	FJ160866
<i>L. mucronatum</i>	E Mediterranean	<i>Syllinum</i>	Turkey	J. Ruiz-Martín 281543 (SEVI)	KJ194515	KJ194521	KJ194527
<i>L. narbonense</i>	Europe	<i>Linum</i>	Spain	J. Ruiz-Martín 281544 (SEV)	KJ194516	KJ194522	KJ194528
<i>L. perenne</i>	Europe	<i>Linum</i>	Cultivate (MJG)	M. Reppinger 040929 (MJG)	FJ169524	FJ160802	FJ160886
<i>L. pubescens</i>	E Mediterranean	<i>Dasylinum</i>	Syria	W. Licht SYR351 (MJG)	FJ169518	FJ160790	FJ160874
<i>L. setaceum</i> 1 (Fig. 5)	W Mediterranean	<i>Linopsis</i>	Spain	J. Ruiz-Martín 281545 (SEV)	KJ194517	KJ194523	KJ194529
<i>L. setaceum</i> 2 ("L. bicolor")	W Mediterranean	<i>Linopsis</i>	Morocco	J. Ruiz-Martín 251249 (SEV)	KJ194518	KJ194524	KJ194530
<i>L. strictum</i>	Cosmopolitan	<i>Linopsis</i>	Italy	W. Licht 040945 (MJG)	FJ169530	FJ160806	FJ160890
<i>L. suffruticosum</i>	W Mediterranean	<i>Linopsis</i>	Spain	C. Navarro et al. CN 2339 (TEX)	FJ169532	FJ160807	FJ160891
<i>L. tenue</i>	W Mediterranean	<i>Linopsis</i>	Spain	M. Quint 040938 (MJG)	FJ169548	FJ160808	FJ160892
<i>L. tenuifolium</i>	Europe and E Mediterranean	<i>Linopsis</i>	Germany	M. Kropf 040934 (MJG)	FJ169529	FJ160809	FJ160893
<i>L. volkensii</i>	E Africa	<i>Linopsis</i>	Tanzania	R.E. Gereau & C.J. Kayombo 4662 (MO)	FJ169531	FJ160813	FJ160897
<i>Anisadenia pubescens</i>	E Asia	–	China	Bartholomew 1011 (GH)	FJ169513	FJ160772	FJ160856
<i>Hugonia busseana</i>	CE Africa	–	Malawi	M.W. 0029 (MJG)	FJ169512	FJ160773	FJ160857
<i>Sclerolobon digynum</i>	W USA	–	USA (California)	M.S. Taylor 3935 (TEX)	FJ169541	FJ160787	FJ160871

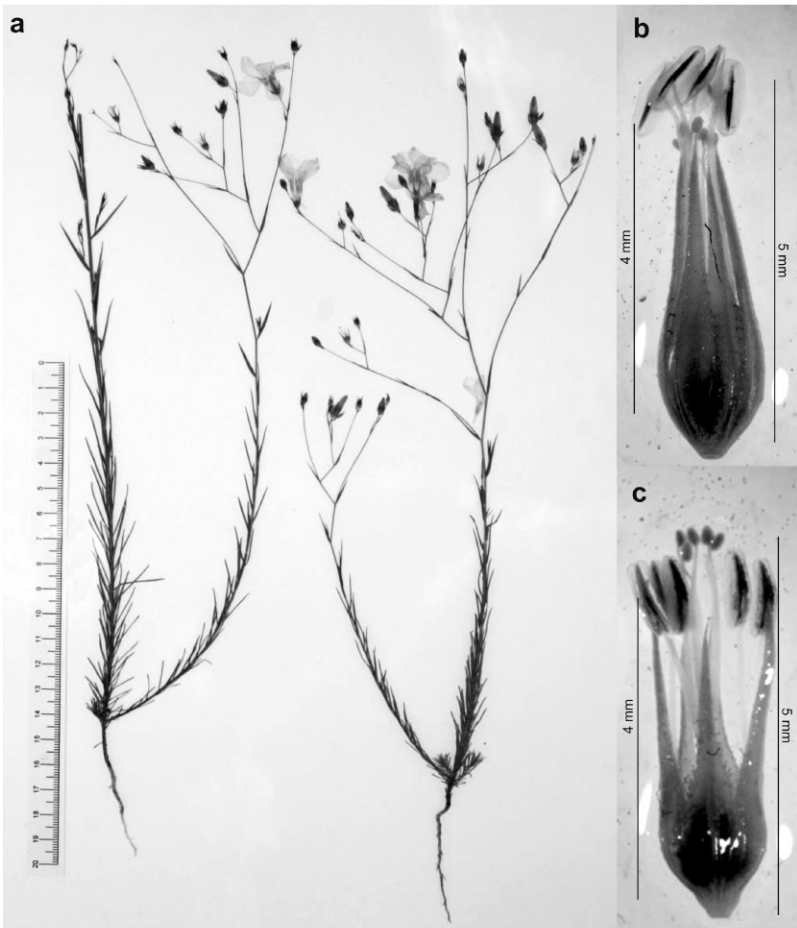


Fig. 1. *Linum flos-carmini* (holotype). — **a:** Holotype specimen. — **b:** Short-styled flower without petals. — **c:** Long-styled flower without petals.

Results

Morphological study

The characters that distinguished *L. setaceum* from *L. flos-carmini* matched those reported by Maire (1933) to distinguish what he called the form *robusta* from *L. setaceum* s. *stricto*: stem length, leaf nervation and leaf length, sepal length and petal size (Figs. 1 and 2; see Table 4 with

measurements and ranges of variation). The variation thresholds did not overlap between the two species (petal size) or did so very slightly (leaf length, sepal length). In addition, we found other traits that allowed differentiation between the species: sepal indumenta, petal colour and arrangement of anthers and stigmas (Table 4). *Linum setaceum* s. *stricto* has sepals with the margin fimbriate in the lower half, yellow and weakly nerved petals, and homostylous flowers (anthers

Table 3. Sequence data information.

Parameters	ITS	<i>ndhF5-8</i>	<i>trnL-F</i>	Combined cpDNA matrix
Number of sequences	23	23	23	23
Missing data	n.a.	1.7%	n.a.	0.6%
Aligned length (bp)	623	440	970	1410
Variable characters	378	234	621	855
Model selected (AIC)	GTR + G	GTR + I + G	GTR + G	GTR + I + G



Fig. 2. *Linum setaceum*. — **a:** Voucher J. Ruiz-Martín 281545 (SEV) with typical morphological characters. — **b:** Detail of the flower, where anthers and stigmas are placed at the same height.

and stigmas positioned at the same height). *Linum flos-carmini* has sepals with the margin fimbriate to glandulose-ciliate in the lower half, yellowish-whitish petals with purple nerves towards the base, and heterostylous flowers with two morphs, pin flowers with long-styled with stigmas above the anthers, and short-styled or thrum flowers with stigmas below the anthers. No significant differences were observed between the North African and Iberian populations of *L. setaceum* (Table 4).

Linum setaceum s. *stricto* is an Iberian–North African taxon, confined in Morocco to the Rif mountains (Fig. 3). *Linum flos-carmini* is a North African endemic in the Atlantic-facing plains and valleys of NW Morocco (Fig. 3). Below we provide an identification key to dis-

tinguish white- and yellow-flowered *Linum* species in North Africa, and detailed morphological descriptions of *L. setaceum* s. *stricto* and *L. flos-carmini* (Fig. 3).

We could not find type specimens of the name *L. bicolor* Schoubs. ex DC. in B, BM, BR, C, FI, K, L, S, UPS or W. However, in GOET we found a voucher collected by Philipp Salzmann (“circa Tindigem”), a contemporary of Schousboe in North Africa (cf. Stafleu & Cowan 1985). That specimen might be more related to Schousboe’s taxonomic concept of *L. bicolor* than other material so named later. Accordingly, *L. bicolor* is lectotypified on this specimen (see below) to ensure an accurate use of the name and prevent future nomenclatural problems.

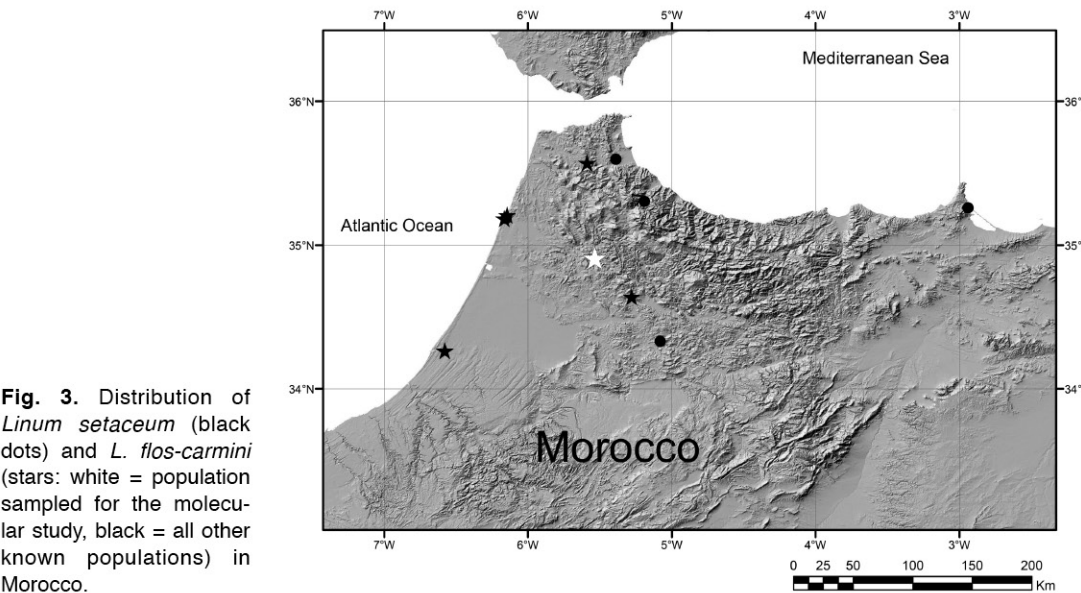


Fig. 3. Distribution of *Linum setaceum* (black dots) and *L. flos-carmini* (stars: white = population sampled for the molecular study, black = all other known populations) in Morocco.

Molecular study

Phylogenetic analysis of the ITS and the two combined-plastid regions (Figs. 4 and 5) gave similar topologies, both in accordance with the previous results (Savolainen *et al.* 2000, McDill *et al.* 2009). In both phylogenetic reconstructions (ITS and plastid) *Linum* was well-supported and it included *Sclerolinum dyginum*. The genus was divided in two main clades, one containing the sections *Linum* and *Dasylinum*, and the other

containing the sections *Linopsis* and *Syllinum*, as well as *Sclerolinum dyginum*. All sections were monophyletic except *Linopsis*. In the ITS phylogeny, this section was divided into a basal grade (*L. africanum* and *L. macraei*) and a well-supported clade in which the section *Syllinum* was nested. In the plastid phylogeny, three well-supported clades emerged: the first containing *L. africanum*, *L. macraei* (both section *Linopsis*) and *Sclerolinum digynum*, the second with most of the taxa in the section *Linopsis*, and the third

Table 4. Main morphological characters of *Linum setaceum* s. stricto populations from North Africa and the Iberian Peninsula, and of *Linum flos-carmini*.

Character	<i>Linum setaceum</i> (North Africa)	<i>Linum setaceum</i> (Iberian Peninsula)	<i>Linum flos-carmini</i>
Stems	10–40 cm, with hairs up to 0.3 mm long	6–55 cm, with hairs up to 0.3 mm long	20–75 cm, with hairs up to 0.5 mm long.
Leaves	1-nerved, those from upper third of stem 5–28.5 × 0.15– 1.25 mm	1-nerved, those from upper third of stem 6–28 × 0.1–1.3 mm	3-nerved, those from upper third of stem 16–42 × (0.5)1–3 mm
Sepals	4.5–6.5 × 1.1–1.55 mm, 1-nerved, margin fimbriate in lower half	4.5–6.3 × 1.1–1.5 mm, 1-nerved, margin fimbriate in lower half	(5)6–7.8(8.4) × 1.3–2 mm, 3-nerved, margin fimbriate to glandulose-ciliate in lower half
Petals	8–19 × 3–6 mm, yellow, rarely with bluish nerves	8–14 × 3–5 mm, yellow, weakly nerved	17–23 × (7)12–14 mm, white to yellowish-whitish, with purple nerves, more marked towards base, in blossom yellowish with bluish nerves
Flowers	homostylous	homostylous	heterostylous

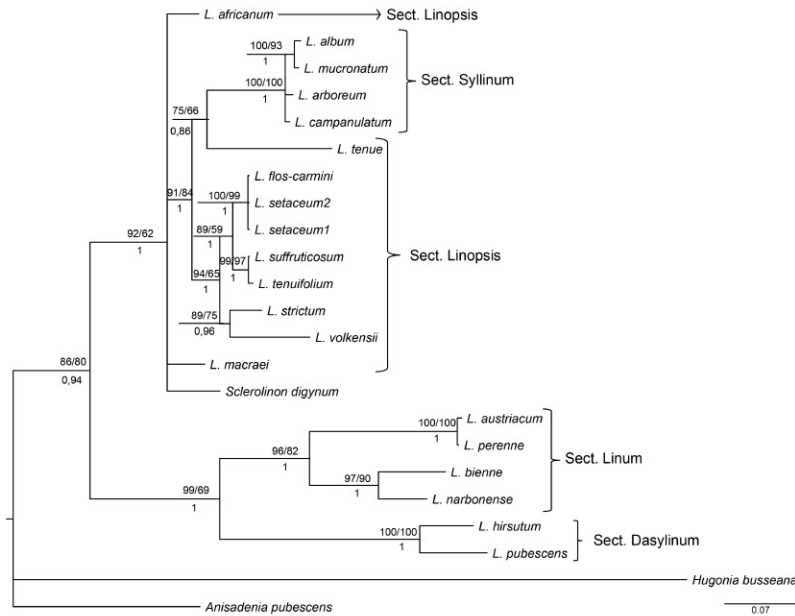


Fig. 4. Phylogeny of ITS from *Linum* and selected outgroup genera from Linaceae. Bayesian consensus tree. ML bootstrap/MP bootstrap values are given above the branches, posterior probability below the branches.

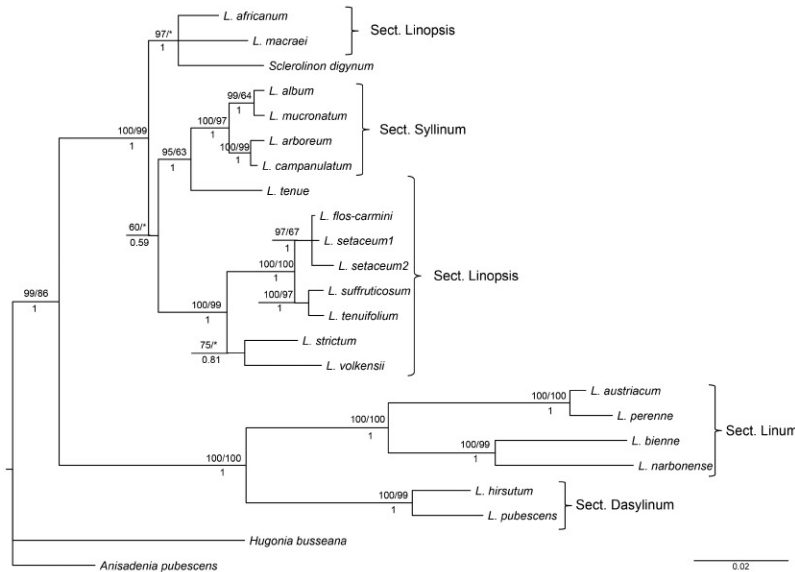


Fig. 5. Phylogeny of combined *ndhF5-8* and *trnL-F* from *Linum* and selected outgroup genera from Linaceae. Bayesian consensus tree. ML bootstrap/MP bootstraps are given above the branches, posterior probability below the branches.

with the section *Syllinum* and *L. tenue* (section *Linopsis*).

The two *L. setaceum* samples and the *L. flos-carmini* sample were placed as sisters to *L. suffruticosum* and *L. tenuifolium* in all the phylogenetic reconstructions, within a well-supported clade with the section *Linopsis*. However, our phylogenetic reconstructions did not resolve the relationships between *L. setaceum* and *L. flos-*

carmini, which appeared unresolved in a polytomy. No autapomorphic molecular characters were found in the *L. flos-carmini* sample.

Sequence information for all markers, including aligned length, informative positions, indels, missing data, and best evolutionary model according to ModelTest (see Material and methods) is summarized in Table 4.

Descriptions of *Linum flos-carmini* and *L. setaceum* s. *stricto*

Linum flos-carmini Ruiz-Martín, Mart. Labarga, Jim. Mejías & Pérez-Barrales, *sp. nova* (Fig. 1)

HOLOTYPE: Morocco. Ouazzane, Secteur forestiere de Bellouta, Commune rurale de Brickcha, Jbel Karkar, 34°54.555'N/5°32.193'W, 130 m a.s.l., 25 May 2011 J. Ruiz Martín & M. Benabent Burguer 166JRM11 (SEV 162513; isotype SEV162513).

Linum setaceum var. *bicolor* f. *robusta* Maire, Bull. Soc. Hist. Nat. Afrique N. 24: 207. 1933. — LECTOTYPE (here designated): Morocco. Larache, Font-Quer, Iter marocc. 1930, n° 406 (MA; isotype MPU).

ETYMOLOGY: Dedicated to Carmina Martín-Cacao, José Ruiz-Martín's mother. The epithet *flos-carmini* means "the flower of the song".

Annual, 20–75 cm, pubescent, with hairs up to 0.5 mm long, whitish, terete, striate, straight to \pm curved. Stems single, erect, \pm densely pubescent, with hairs irregularly distributed across stem surface, more abundant towards base. Leaves herbaceous, those from upper third of stem 16–42 \times (0.5)1–3 mm, alternate, sessile, deciduous after fructification, erect to erect-patent, densely arranged, imbricate, from sublinear to narrowly lanceolate, subulate at apex, sometimes lowermost with rounded apex, 3-nerved, pubescent, with hairs in lower half, and antrorse prickles and shiny papillae towards the apex, frequently involute. Inflorescence a dichasium cyme, subcorymbiform, \pm laxous, regularly zigzag branched, with (15)40–70 flowers. Bracts 9–25 \times 1–2.5 mm, sublinear to lanceolate, alternate. Pedicels erect-patent, growing up to 30 mm long in fructification. Flowers bisexual, heterostylous, with one morph having stamens below stigma level, and other with stamens above stigma level. Sepals (5)6–7.8(8.4) \times 1.3–2 mm, ovate-lanceolate, outer ones gradually attenuate into a long mucro, inner ones more abruptly contracted into an acumen, keeled, 3-nerved, central one strongly marked, with a hyaline margin, fimbriate to glandulose-ciliate in lower half, antrorsely-scabrid towards apex. Petals free, 17–23 \times (7)12–14 mm, ovate-spathulate, gradually attenuate towards base, mucronulate at apex, white to yellowish-whitish, yellow prior to anthesis, with purple nerves, more marked towards base, in blossom yellowish with bluish

nerves. Stigmata 5, capitate. Fruit an ovate capsule with ten brown seeds, their measurements unknown. Flowering in May–June.

This species grows in Mediterranean shrub land on basic soils. It is distributed in the Atlantic drainage of NW Morocco (Fig. 3). Heterostyly was confirmed in field and herbarium material. A total of 100 flowers from the visited population in Ouazzane had 55 long-styled pin-flowers and 45 short-styled thrum-flowers.

Linum setaceum Brot. (Fig. 5)

Fl. Lusit. 1: 484. 1804. — TYPE: "Hab. in collibus calcareis prope Conimbricam".

Linum bicolor Schousb. ex DC., Prodr. [A.P. de Candolle] 1: 428. 1824. — LECTOTYPE (here designated): "In collibus apricis circa Tingidem", *Salzmann s.n.* (GOET). — *Linum setaceum* var. *bicolor* (Schousb. ex DC.) Maire, Bull. Soc. Hist. Nat. Afrique N. 24: 206. 1933.

Annual, 6–55 cm, pubescent, with hairs up to 0.3 mm long, whitish, terete, striated, straight to \pm curved. Stems frequently single, erect, sometimes ramified in up to 10 different branches from base, \pm densely pubescent, with hairs irregularly distributed across stem surface, more abundant towards base. Leaves herbaceous, those from upper third of stem 6–28 \times 0.1–1.3 mm, alternate, sessile, deciduous after fructification, erect to erect-patent, densely arranged, imbricate, from sublinear to narrowly lanceolate, subulate at apex, sometimes lowermost with a rounded apex, 1-nerved, pubescent, frequently involute, with whitish antrorse prickles in margins. Inflorescence a dichasium cyme, subcorymbiform, \pm laxous, regularly branched, with 5–40(55) flowers. Bracts 5–15 \times 0.1–0.9 mm, sublinear, alternate, sometimes up to 3 bracts under one pedicel. Pedicels erect-patent, growing up to 30 mm long in fructification. Flowers bisexual, homostylous, with stamens at same level as stigmata. Sepals 4.5–6.3 \times 1.1–1.5 mm, 1.2–1.7 times longer than fruit, ovate-lanceolate, outer ones gradually attenuate into a long mucro, inner ones more abruptly contracted into an acumen, keeled, 1-nerved, sometimes with two additional poorly-marked lateral nerves at base, with a hyaline margin, fimbriate in lower half, antrorsely-scabrid towards apex. Petals free, 8–14 \times 3–5 mm, spathulate,

gradually attenuate towards base, mucronulate at apex, yellow, weakly nerved. Stigmata 5, capitate. Capsule 3–4 mm length, subglobose, abruptly contracted in base, with a mucro up to 0.3 mm long in apex, glabrous, yellowish-brown. Seeds $1.8\text{--}2 \times 0.9\text{--}1$ mm, subreniform, brownish, shiny, weakly striate, with one side concave and slightly winged. Flowering in May–June.

This species grows in grasslands and clearings within Mediterranean shrub vegetation. It is distributed in S and W Iberian Peninsula and NW Morocco in the Rif Mountains (Fig. 3). The North African forms called var. *bicolor*, with yellow petals turning purplish-bluish toward the base, may deserve taxonomic recognition at infraspecific level.

Discussion

Linum flos-carmini and *L. setaceum* s. *stricto*

The data obtained in the morphological study not only supported the morphometric differences reported by Maire (1933), but also showed that there is no or very scarce overlap between the distinguishing characters (Table 4, Figs. 1 and 2). Such a small morphological overlap between species (less than 25%) is thought to be acceptable (Valcárcel & Vargas 2010, Jiménez-Mejías et al. 2014).

We also found additional features that help to distinguish *L. setaceum* s. *stricto* from *L. flos-carmini*: sepal indumenta, petal colour, and especially the arrangement of anthers and stigmas (Table 4). This last character is vital for the sexual reproduction, and it has been reported as a key trait to characterize other *Linum* taxa such as South African *L. heterostylum* and *L. comptoni* (Rogers 1981). In an extensive study of the genera in the Mediterranean Basin, where the group is more diverse, we never detected any species with heterostylous and homostylous populations. The above evidence together supports the status of *L. flos-carmini* as a species distinct from *L. setaceum*.

The molecular study revealed a close relationship between *L. setaceum* and *L. flos-carmini*. The taxa are allopatric, *L. setaceum* s.

stricto being distributed mainly north of the Rif Mountains, while *L. flos-carmini* inhabits the Atlantic NW Morocco (Fig. 3). However, a similar lack of variation found for *L. setaceum* s. *stricto* and *L. flos-carmini* in the studied sequences also occurs in other closely-related species of *Linum*, such as *L. tenuifolium* aggr. Future studies with microsatellites or AFLPs could shed light on the deeper taxonomic relationships within the section *Linopsis*.

Identity of *Linum bicolor*

Linum bicolor was described in De Candolle's *Prodromus* (1824) from near Tanger (Morocco) as "a not well known species". Later, Ball (1878) also considered the taxon doubtful. The most recent reference to *L. bicolor* is from Maire (1933), who considered that the taxon was a variety of *L. setaceum*. Maire distinguished it from the type variety by its slightly larger petals ("c. 1.5 mm longis"), which are yellow, turning purplish-bluish toward the base (instead of being entirely yellowish), as well as by the larger sepals (5 mm long). He cited the taxon from Tanger ("Tingidem") and from an additional unplaced location "in valle amnis Miqués".

The voucher collected by Philipp Salzmann from North Africa is accurate material to typify the name *Linum bicolor* Schousb. ex DC. Several arguments support this view. First, Peter K.A. Schousboe was a contemporary of Salzmann's (cf. Stafleu & Cowan 1985), and it is likely that both botanists were in direct contact and probably exchanged plant specimens. Second, the collection site of Salzmann's voucher "*in collibus apricis circa Tingidem*" matches the *indicatio locotypica* cited by De Candolle (1824) as "*prope Tanger*". Third, the collection of the material by Salzmann could be coetaneous or predate the publication of the name in 1824, despite no date was provided in the herbarium label. Stafleu and Cowan (1985) established that Salzmann had visited North Africa in 1823–1825. Therefore, we designate Salzmann's specimen as the lectotype of *L. bicolor*, preventing further problems with the application of the name.

Regarding the species revalorized in this paper, based on the form *robusta*, the morpho-

logical evidence presented here shows that both Salzmann's specimen and the description provided Maire (1933), fit the variation observed in *L. setaceum*, with the single exception of the petals turning purplish-bluish towards the base. We consider that further studies are necessary to evaluate if these forms deserve taxonomic recognition within *L. setaceum*.

Identification key

With this key it should be possible to distinguish *L. flos-carmini* from species and species complexes in *Linum* having yellow or whitish flowers (all from the section *Linopsis*) from NW Africa.

1. Perennial; lowermost leaves opposite to sub-opposite; sepals lanceolate-ovate as long as or slightly longer than capsule; petals deep yellow *L. maritimum*
1. Annual or perennial; lowermost leaves alternate to fasciculate; sepals as long as or longer than capsule; petals from deep yellow to white or pinkish-white 2
2. Leaf surface glabrous, without prickles, with a smooth margin; stems entirely glabrous 3
2. Leaf surface sparsely prickled, with a wrinkled or serrulate margin, at least in its proximal half (margin is sometimes hidden because leaves are involute); stems glabrous or hispid 4
3. Petals 8–24 mm long; flowers heterostylous *L. tenue* group
3. Petals 3.5–5(6) mm long; flowers homostylous *L. trigynum*
4. Stems glabrous or papillose, rarely with some conspicuous hairs near leaf base; leaves 0.7–6.5(7) mm wide, from lanceolate to linear-lanceolate; petals deep yellow 5
4. Stems hispid at base, rarely glabrous; leaves 0.1–3 mm wide, from narrowly lanceolate to subulate; petals from white to yellow or pinkish-white 6
5. Inflorescence contracted, spike-like or corymb-like; flowers sessile or subsessile with thick pedicels rarely longer than calyx; petals up to 6–12 mm long *L. strictum*
5. Inflorescence lax, corymb-like; flowers conspicuously pedicellate, with pedicels as long as or longer than calyx, mostly isolated and not forming dense clusters; petals at least 15 mm long *L. corymbiferum* group
6. Annual, or biannual, herbaceous; leaves from narrowly lanceolate to linear lanceolate; petals from white to yellowish 7
6. Perennial, suffruticose; leaves from linear lanceolate to subulate; petals from white to yellowish or pinkish-white 8
7. Petals 8–14 mm long, yellow; sepals 4.5–6.3 mm long, fimbriate in lower half; homostylous *L. setaceum*
7. Petals 17–23 mm long, white to yellowish-white, with bluish venation; sepals (5)6–7.8(8.4) mm long, fimbriate to glandulose-ciliate in lower half; heterostylous *L. flos-carmini*
8. Adaxial surface of lower and middle leaves with a conspicuous midvein, abaxial surface densely papillose; leaves strongly involute, with a conspicuously thickened margin; heterostylous *L. suffruticosum* group
8. Adaxial surface of lower and middle leaves with a scarcely marked midvein, abaxial surface smooth; leaves flat or scarcely involuted, with an obscurely thickened margin; homostylous *L. tenuifolium* s. *stricto*

Acknowledgements

We thank curators and staff of B, BM, BR, C, FI, G, GOET, K, L, MA, SEV, UPOS, UPS and W for loan of specimens and search of type material of *L. bicolor*; F. Muñoz-Garmendia and S. Talavera for comments on *Linum* nomenclature; J. Arroyo for comments during the development of this work; M. Benabent-Burguer kindly collaborated in the field trip around Morocco. This research was supported by the Spanish Ministry of Science and Innovation through the project CGL2009-12565 and the associated FPI grant BES-2008-003946 to José Ruiz-Martín. The collection of samples complies with the current laws of the country in which it was performed.

References

- Ball J. 1878: *Spicilegium florae maroccanae*. — *The Journal of the Linnean Society, Botany* 16: 281–772.
- Castresana J. 2000: Selection of conserved blocks from multiple alignments for their use in phylogenetic analysis. — *Molecular Biology & Evolution* 17: 540–552.
- De Candolle A.P. 1824: *Prodromus systematis naturalis regni vegetabilis sive Enumeratio contracta ordinum generum specierumque plantarum huc usque cognitarum, juxta methodi naturalis, normas digesta, Pars prima: Sistens Thalamiflorarum Ordines LIV*. — Treuttel et Würtz, Parisiis.
- Engler A. 1908: *Linaceae africanae*. II. — *Botanische Jahrbücher für Systematik, Pflanzengeschichte und Pflanzengeographie* 40: 45–47.
- Fennane M., Ibntato M., Martez J., Ouyahaya A. & El Oualidi J. 2007: *Flore pratique de Maroc, manuel de détermination des plantes vasculaires*. — Institut Scientifique, Rabat.
- Goloboff P.A., Farris J.S. & Nixon K.C. 2008: TNT, a free program for phylogenetic analysis. — *Cladistics* 24: 774–786.
- Greuter W., Burdet H. & Long G. 1989: *Med-checklist*, vol. 4. — Conservatoire et Jardin Botaniques, Genève.
- Griffith W. 1847–1848: *Posthumous papers: Journals of Travels in Assam, Burma, Bootan, Afghanistan and the neighbouring countries: (Itinerary, notes on Plants col-*

- lected in the Khasyah and Bootan Mountains, 1837-38, in *Afghanistan and neighbouring countries, 1839-41*. — Bishop's College Press, Calcutta.
- Hudson W. 1778: *Flora Anglica: exhibens plantas per Regnum Britanniae sponte crescentes, distributas secundum systema sexuale: cum differentiis specierum, synonymis auctorum, nominibus incolarum, solo locorum, tempore florendi, officinalibus pharmacopaeorum. Tomus II.* — J. Nourse, Londini
- Jansen R.C. 1992: A general mixture model for mapping quantitative trait loci by using molecular markers. — *Theoretical and Applied Genetics* 85: 252-260.
- Jiménez-Mejías P., Luceño M. & Martín-Bravo S. 2014: Species boundaries within the southwest Old World populations of the *Carex flava* group (Cyperaceae). — *Systematic Botany* 39: 117-131.
- Katoh K. & Toh H. 2008: Recent developments in the MAFFT multiple sequence alignment program. — *Briefings in Bioinformatics* 9: 286-298.
- Lebrun J.P. & Sork A.L. 1978: *Index general des "Contributions à l'étude de la flore de l'Afrique du nord" du Dr. René Maire.* — IEMVT, Maisons-Alfort.
- López G. 1979: Algunas consideraciones sobre los linos del grupo *Linum tenuifolium* L. en España. — *Bulletin de la Société Botanique de Genève* 1: 100-109.
- Maire R. 1933: Contributions à l'étude de la Flore de l'Afrique du Nord 20. — *Bulletin de la Société d'histoire naturelle d'Afrique du Nord* 24: 194-232.
- Maire R. 1952-1987: *Flore de l'Afrique du Nord*, vols. 1-16. — Paul Lechevalier, Paris.
- Miller P. 1768: *Gardeners dictionary.* — John & Francis Livingston, London.
- McDill J.R., Replinger M., Simpson B.B., Kadereit J.W. & Schwarzbach A. 2009: The phylogeny of *Linum* and Linaceae subfamily Linoideae, with implications for their systematics, biogeography, and evolution of heterostyly. — *Systematic Botany* 34: 386-405.
- McDill J.R. & Simpson B.B. 2011: Molecular phylogenetics of Linaceae with complete generic sampling and data from two plastid genes. — *Botanical Journal of the Linnean Society* 165: 64-83.
- Ockendon D.J. & Walters S.M. 1968: *Linum* L. — In: Tutin T.G., Heywood V.H., Burges N.A., Moore N.A., Valentin D.H., Walters S.M. & Webb D.A. (eds.), *Flora Europaea*, vol. 2: 206-211. Cambridge University Press, Cambridge.
- Posada D. & Crandall K.A. 1998: ModelTest: testing the model of DNA substitution. — *Bioinformatics: Applications Note* 14: 817-818.
- Quezel P. & Santa S. 1963: *Nouvelle flore de l'Algérie: et des régions desertiques meridionales.* — Centre National de la Recherche Scientifique, Paris.
- Rogers C.M. 1966: *Sclerolimon*, a new genus in the Linaceae. — *Madroño* 18: 181-184.
- Rogers C.M. 1981: A revision of the genus *Linum* in southern Africa. — *Nordic Journal of Botany* 1: 711-722.
- Ronquist F. & Huelsenbeck J.P. 2003: MrBayes 3: Bayesian phylogenetic inference under mixed models. — *Bioinformatics* 19: 1572-1574.
- Savolainen V., Chase M.W., Hoot S.B., Morton C.M., Soltis D.E., Bayer C. & Fay M.F. 2000: Phylogenetics of flowering plants based on combined analysis of plastid *atpB* and *rbcL* gene sequences. — *Systematic Biology* 49: 306-362.
- Stafleu F.A. & Cowan R.S. 1985: Taxonomic literature, vol. 5. Sal-St. — *Regnum Vegetabile* 112: 1-1066.
- Stamatakis A. 2006: RAXML-VI-HPC: maximum likelihood-based phylogenetic analyses with thousands of taxa and mixed models. — *Bioinformatics* 22: 2688-2690.
- Sun Y., Skinner D.Z., Liang G.H. & Hulbert S.H. 1994: Phylogenetic analysis of *Sorghum* and related taxa using internal transcribed spacers of nuclear ribosomal DNA. — *Theoretical and Applied Genetics* 89: 26-32.
- Taberlet P., Gielly L., Pautou G. & Bouvet J. 1991: Universal primers for amplification of three non-coding regions of chloroplast DNA. — *Plant Molecular Biology* 17: 1105-1109.
- Valdés B., Rejdali M., Achhal El Kadmiri A., Jury J.M.S.L. & Montserrat M. 2002: *Catalogue des plantes vasculaires du Nord du Maroc incluant des clés d'identification*, vol. 2. — Consejo Superior de Investigaciones Científicas, Madrid.
- Valcárcel V. & Vargas P. 2010: Quantitative morphology and species delimitation under the general lineage concept. Optimization for *Hedera* (Araliaceae). — *American Journal of Botany* 97: 1555-1573.

Appendix

Specimens used in the morphological study

Linum setaceum: **Morocco**. Hab. in saxosis calc. Promontorii Ras Sidi-elAhbed (Bocoia), *Font-Quer* 290 (MA); 2^a caseta, Riff, 11 June 1915 A. Caballero (MA); Djebel Derza, *Mas Guindal* (MA); Riff, *Vidal & López* 762 (MA); NE of Chefchaouen, *S.L. Jury* 19333 *et al.* (MA). **Portugal**. Algarve, *Malato-Beliz & J.A. Guerra* 15820 (MA); Beira Litoral, 21 June 1981, *E. Rico s.n.* (MA); Beira Litoral, June 1902 *G. Sampaio s.n.* (MA); Beira Litoral, June 1915 *Sampaio s.n.* (SEV); Estremadura, *J. Malato-Beliz & J.A. Guerra* 10961 (MA); Alto Alentejo, *J. Malato-Beliz & J.A. Guerra* 14364 (MA). **Spain**. Cádiz, 3 June 1922 *E. Gros s.n.* (MA); Cádiz, 10 July 1983 A. Aparicio (MA); Cádiz, 11 May 1980 A. Aparicio *s.n.* (SEV); Málaga, *C. Navarro et al.* CN2274 (MA); Málaga, 11 May 1931 *C. Vicioso s.n.* (MA); Granada, 6 June 1980 *M. Ladero et al. s.n.* (MA); Sevilla, 13 July 1978 *J.A. Devesa et al. s.n.* (SEV); Sevilla, 23 May 1982 *J. Arroyo & J.M. Gil s.n.* (SEV); Córdoba, *J. Muñoz s.n.* 6387/80 (SEV); Córdoba, 27 May 1978 *J.M. Muñoz s.n.* (SEV). — *Linum flos-carmini*: **Morocco**. Ouazzane, *J. Ruiz Martín & M. Ben-abent Burguer* 166JRM11, (type material SEV162513, SEV281783). Paratypes: Larache, Iter marocc. 1930, *Font-Quer* 406 (MA, MPU); *L. setaceum* var. *bicolor* f. *robusta* lectotypes); hab. In argillosis, pr. El Araix, l. Txumix, 25 May 1930 *Font-Quer* 405 (MA); Djebala, Ouezzan, coteux calcaires, 5 May 1929 *J. Jahandiez* 131 (MA); de Tanger al Fondak 2 May 1921, *C. Pau s.n.* (MA); Lixus (Larache), 25 June 1923 A. Caballero *s.n.* (MA); Kenitra, 12 km S Ksar-elKebir an der Strasse nach Kenitra (P2), 100 m, sandige Flächen, 4 May 1987 *D. Podlech* 43616 (MA); Ouezzane, Mjara, entre Ain Dorij y Teroual, pastizal cerca del rio, 160 m, 22 May 2004 *F.J. Márquez et al. s.n.* (SEV251249).