

Taraxacum montellii, a species belonging to sect. *Naevosa*, found in Finland

Carl Eric Sonck

Sonck, C. E., Tavastvägen 2 A 20, FIN-00530 Helsingfors, Finland

Received 19 December 1997, accepted 9 January 1998

In 1916 Justus Montell, a forester in Lapland, found a new species of *Taraxacum* L. (Cichoriaceae). Later Harald Lindberg named it *T. montellii* H. Lindb., but failed to give a description. Nearly 80 years later I visited the same locality at Salmijärvi in Muonio parish, where I managed to find a reduced number of the species. It is so far known from only three localities in Finnish Lapland.

Key words: *Taraxacum*, taxonomy

The legendary forester in Lapland, Justus Montell (1869–1954), was the founder of the big collections of all kinds of plants, Lepidoptera and stuffed birds at Åbo Academi University and also a friend of mine. During a journey on official business in 1916 at a farmer's house at Salmijärvi in Muonio parish, he found a new species of *Taraxacum* L., which Harald Lindberg later named *T. montellii* H. Lindb. As this species was never described, I decided nearly 80 years later, in 1992 and 1994, to visit the meadows at lake Salmijärvi. My visit was successful, for there still was a reduced number of the species.

In the summer of 1986 I had collected *Taraxaca* in the region of Kilpisjärvi and found some specimens of *T. montellii* on a lawn near the tourist station. In July 1997, I, together with my friend Juhani Räsänen, visited Varpuniemi at Sevettijärvi in order to collect *T. cymbifolium* H. Lindb. ex Dahlst. We were surprised to find two specimens of *T. montellii* among the plants collected by Räsänen.

Taraxacum montellii H. Lindb. ex Sonck (Figs. 1–3)

Planta mediocris, 15–25 cm alta, e sectione Naevosa. Folia laete prasino-viridia, 10–15 cm longa, 1–3 cm lata, maculata vel partim non-maculata, supra araneosa, subtus glabra, petiolis valde alatis, pallidis, cum nervo pallido. Lobi laterales, 3–4, breviter deltoidei-subtriangulares, acuti, patuli vel ± retroversi. Lobus terminalis triangularis, acutus, ad 3 cm latus, integer vel saepe in uno latere vel utrinque dentibus singulis brevibus instructus. Interlobia ad 10 mm lata, in fol. exterioribus fere integra, in fol. interioribus dentibus rectis, tenuibus acutis parce instructa. Scapi parce araneosi, saepe sordide purpurei. Involucrum mediocre (ca. 16 mm longum, 10 mm latum), olivaceo-viride, basis ovato-truncata. Squamae exteriores pallide olivaceo-virides, sat late (ad 0.2 mm) albido-marginatae, 2–3 mm latae, ad 9 mm longae, non-corniculatae. Squamae interiores vulgo non-corniculatae, infra apicem interdum leviter callosae. Calathium luteum, ca.



Fig. 1. *Taraxacum montellii* H. Lindb. ex Sonck (holotype). Photo by the author.

4 cm diametro. Ligulae marginales subtus sat laete canescentes, ligularum dentes lutei. Antherae polliniferae, stigmae olivaceo-viridia, \pm obscura. Achenium stramineum, 3–3.2 mm longum (pyr. excl.), ca. 1 mm latum, superne spinulosum, ceterum \pm laeve, in pyramidem subcylindricam 0.6 mm longam abiens. Rostrum 12 mm, pappus albidus, ca. 6 mm longus.

Holotypus: Fennia. Lapponia kemensis, Muonio, torräng vid Salmijärvi gård, 12.VII.1916, *Justus Montell* (TURA). Topotypus: Fennia. Lapponia kemensis, Muonio, Salmijärvi, 4.VII.1994, *C. E. Sonck* (H). — Paratypus: Fennia. Lapponia enontekiensis, Kilpisjärvi, on a lawn at the tourist station, 14.VII.1986, *C. E. Sonck* (H). — Paratypus: Fennia. Lapponia inarensis, Sevettjärvi, Varpuniemi, 10.VII.1997, *Juhani Räsänen & C. E. Sonck*.

Acknowledgements. I am grateful to Nicole Nycopp for checking the Latin.

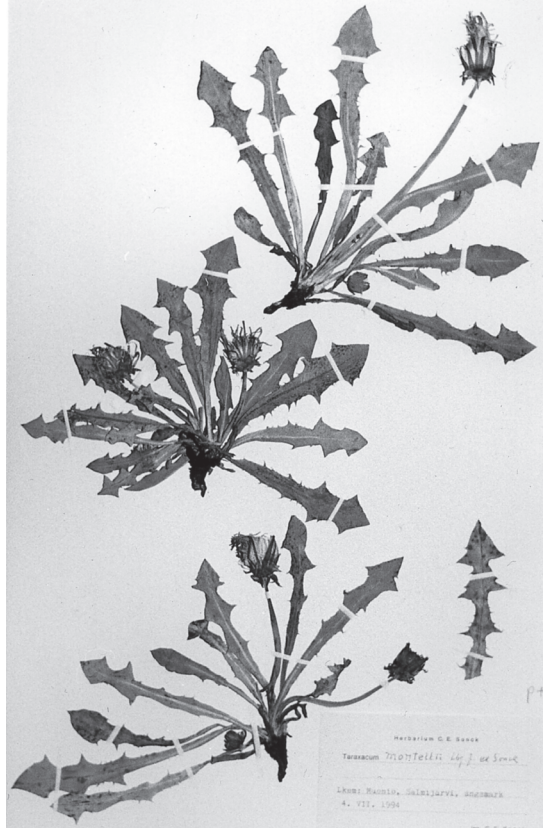


Fig. 2. *Taraxacum montellii* H. Lindb. ex Sonck (topotype). Photo by the author.



Fig. 3. Achenes of *Taraxacum montellii* H. Lindb. ex Sonck ($\times 15$). Photo by Tuuli Timonen.